

## Connell 5 Ultrasound Machine (Voluson S10 Expert) Obstetrical Anesthesiology Lumbar Neuraxial Scanning

1) Plug in (very short battery life)

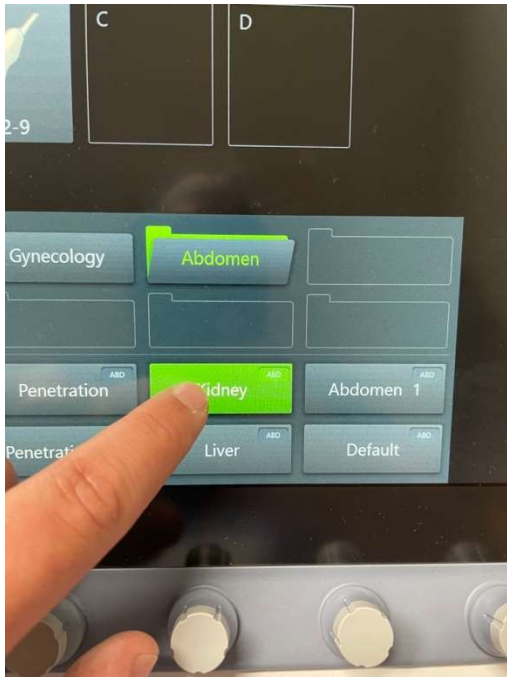


2) Press Probe

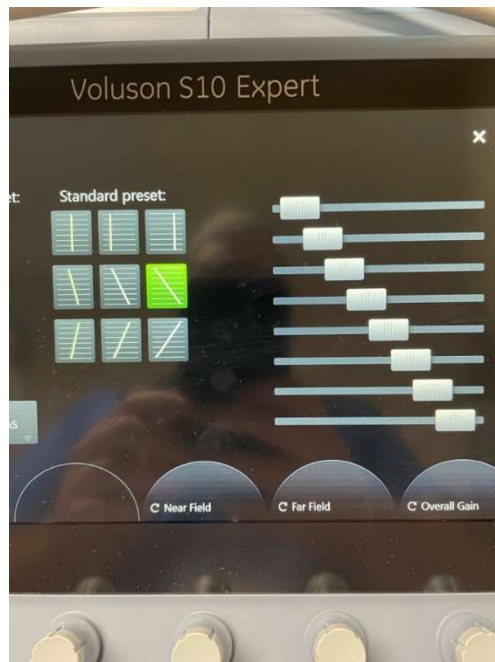


3) Choose low frequency curved transducer (C1-5)

4) Use touch screen to choose Abdomen and then Kidney



5) Open TGC panel on side of touch screen to adjust gain for better visualization of far field



- 6) Adjust Depth as necessary (raised round button toggles up and down to change depth, button located on the upper right side of roller ball)



- 7) Can Freeze and use Calc button with roller ball for measurements as necessary

#### Learning Resources:

SM Ghosh, BSc MBBS FRCA, C Madjdpour, MD, KJ Chin, MBBS MMed FANZCA FRCPC, Ultrasound-guided lumbar central neuraxial block, *BJA Education*, Volume 16, Issue 7, July 2016, Pages 213–220, <https://doi.org/10.1093/bjaed/mkv048>

Video for Ultrasound in Morbid Obesity  
<https://www.youtube.com/watch?v=KXTaP9PVZW0>